



Mech-Eye LNX-8080 3D Laser Profiler

· **4K+ Resolution** · **Ultra-High Scan Rate**
For high-precision industrial inspection and measurement in industries such as consumer electronics and EV battery.

4096

data points per profile

High Dynamic Range (HDR) Imaging

handles various scenarios

Micron-Level

measurement accuracy

3.3-15 kHz

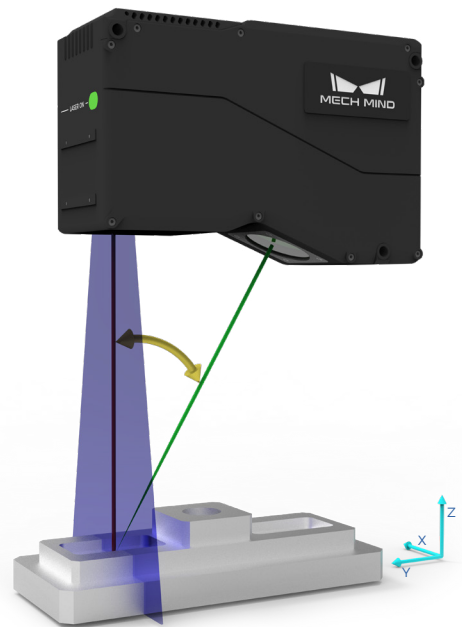
ultra-high scan rate

Easy to Use

compliant with GenICam,
GigE Vision

IP67

protection



Quick Specs

Data Points/Profile: 4096

Reference Distance (RD): 245 mm

Measurement Range Z: 80 mm

Measurement Range X (Near): 76 mm

Measurement Range X (RD): 87 mm

Measurement Range X (Far): 96 mm

Resolution X: 23.5 μ m

Repeatability Z: 1 μ m

Linearity Z: \pm 0.02% of F.S.

Scan Rate: 3.3-15 kHz

Weight: 1.7 kg

Dimensions: 182 x 65 x 119 mm

Laser: Blue (450nm, Class 3R)

Input Voltage: 24V DC

Max. Input Power: 25 W

Communication Interface: Gigabit Ethernet

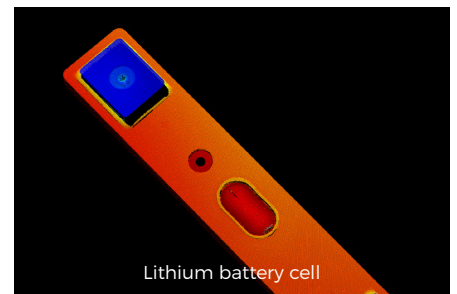
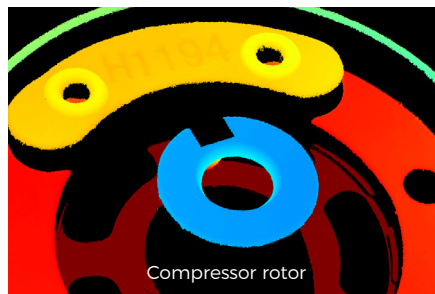
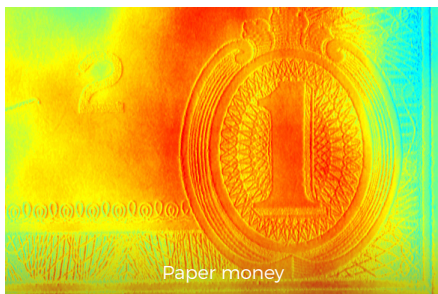
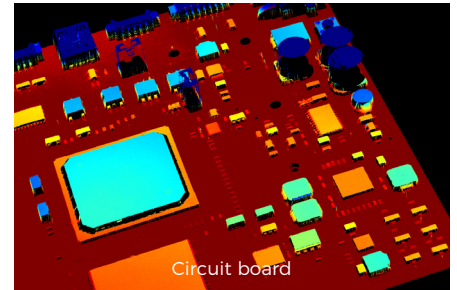
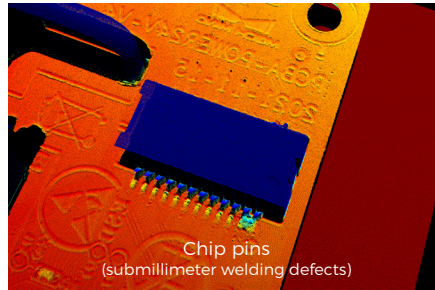
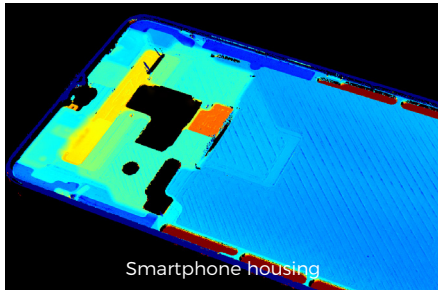
Operating Temperature: 0-45°C

Safety and EMC: CE/FCC/VCCI/UKCA/KC

IP Rating: IP67

Inspect and Measure with Speed and Accuracy

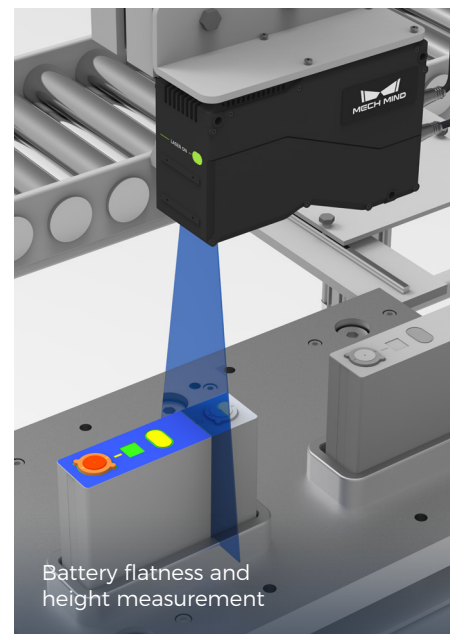
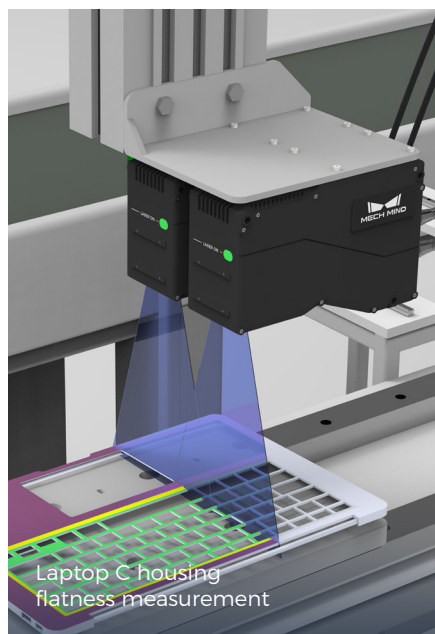
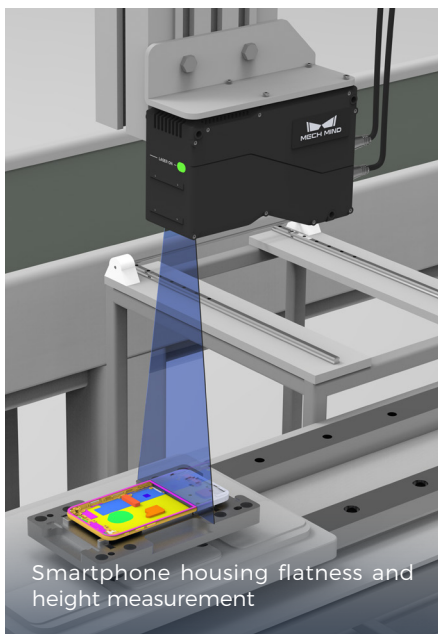
- 4096 data points per profile produces high-quality point clouds, allowing for accurate 3D inspection and measurement of small features.
- Scan rate of 3.3 kHz (full field of view) and up to 15 kHz (scan of full X measurement range). Advanced optics and algorithms deliver highly accurate 3D data at a faster speed.
- **Single-shot HDR function.** Accurate measurement of dark and reflective surfaces in a single shot.



▲ Color rendered by height

Applications

- Industries: Consumer electronics, EV battery, automotive, etc.
- Application scenarios: Shape, surface, and height inspection of various parts, including electronic components, lithium battery modules, and small metal parts.



Mech-Mind Robotics
www.mech-mind.com
info@mech-mind.net